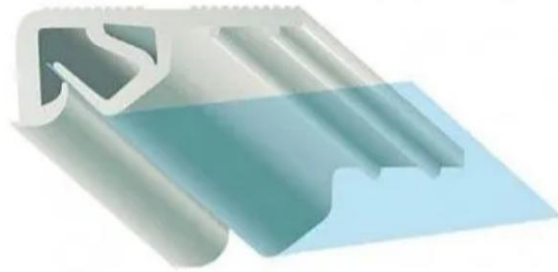


Date: October 2025

Product group: BoStretch “C/WP profile” (Ceiling & Wall panel profile)



Description

The BoStretch PVC profile is a lightweight clip-type perimeter profile designed to securely hold stretch textile membranes for soffit and wall panel.

Manufactured from durable PVC, it offers a simple and cost-effective solution for interior ceiling & wall panel applications. Its 2-meter length ensures ease of handling, seamless joints, and compatibility with a variety of ceiling layouts.

Key features

- Material: Rigid PVC- lightweight, durable, and corrosion-resistant
- Clip-type design for quick and secure membrane fixing
- Length: 2m per piece for easy handling and installation
- Weight: Approx. 172 g per linear meter (344 g per piece)
- Designed for stretch ceiling and wall panel textile membranes
- Easy to cut, drill, and align on-site
- Available in both black and white colours



beyond acoustics

Use cases

- Perimeter profile for textile stretch ceiling and wall panel systems (BoStretch Textile Fabric)
- Interior applications including offices, retail, entertainment, hospitality, cultural spaces, and education.
- Suitable for suspended ceilings, ceiling rafts/ islands, wall panels, or flat soffit applications
- Projects requiring lightweight, economical profile systems

Application:

- Fix directly to compatible substrates (e.g., concrete, blockwork, metal or timber frame) using suitable fasteners
- Ensure accurate alignment to maintain flatness and tight joints
- Profiles provide support for textile fabric only; all MEP services (lighting, sprinklers, HVAC, etc.) must be independently supported.

Substrate conditions:

- Substrate must be clean, dry, and structurally stable
- Surfaces must be free of dust, grease, or loose particles before installation
- Verify pull-out strength of suitable fixings by others relative to substrate type
- Install only under recommended ambient conditions for textile membranes (temperature and humidity within supplier guidelines)
- Uneven substrates should be leveled to guarantee correct alignment