

www.bostretch.com

**BOSTRETCH**  
beyond acoustics by Bowiq

# INSTALLATION MANUAL

## BOSTRETCH® CEILING

**BOWIQ**  
beyond acoustics

**Europe, Middle East & Asia**

**Bowiq Benelux BV**

Hullenbergweg 278

1101 BV Amsterdam

info@bowiq.com

www.bowiq.com

**North America**

**Bowiq Nort America LLC**

16192 Coastal Highway, Lewes,

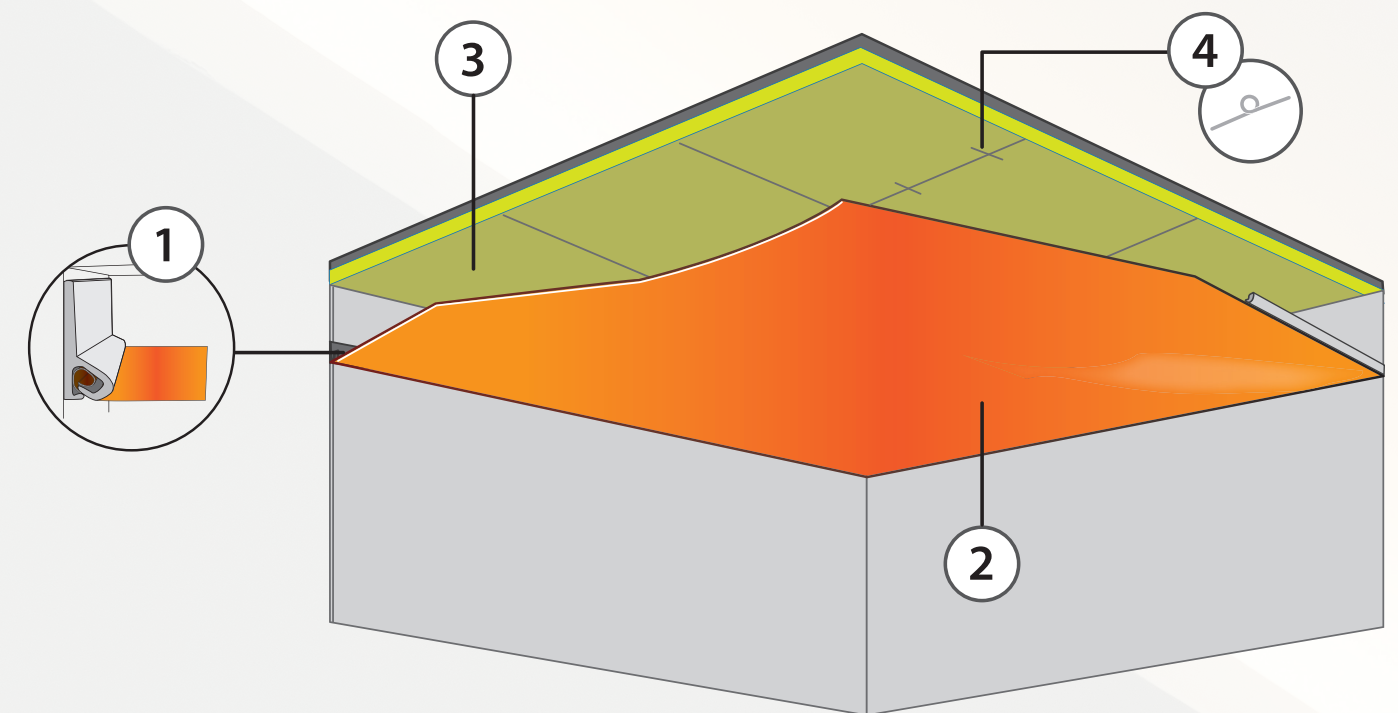
DE 19958, USA

Tel.: +1 302 703 7600

# SITE CONDITIONS

- 1. Envelope closed:** Windows/doors installed; building weather-tight.
- 2. Wet trades complete & dry:** Plastering, screeds, painting above ceiling finished, and dry.
- 3. All Mechanical, Electrical, and Plumbing (MEP)** works in the ceiling void must be finalized, tested, and commissioned prior to fabric installation. Lighting, sprinklers, HVAC diffusers, speakers, etc., should be in their final positions, and exact cut-out positions must be clearly marked.
- 4. Ceiling Fixtures Coordination**  
Coordination must be done in advance for any fixtures that will penetrate or be integrated into the stretch ceiling.  
Templates and shop drawings should be provided for accurate cutouts.
- 5. Ambient conditions:** The HVAC system should be operational to maintain stable conditions before, during, and after installation.  
Temperature should remain within the design range, relative humidity below 50%, and room temperature between 15–30°C, with adequate ventilation.
- 6. Structure readiness:** Ensure the fixing substrate (concrete, steel, timber, or gypsum) is verified and capable of supporting the tension of the perimeter profiles and fabric.

## Wall-to-Wall



- ① Profile
- ② Textile Fabric
- ③ Acoustic panel (GW)
- ④ BoCooustic Washer



Always follow Bowiq drawings and the latest BoStretch® data sheets.  
Coordinate with other trades before starting.

## PreStart & SetOut

- Verify room dimensions, datum level, and module lines. Confirm shadowgap offsets and interfaces.
- Mark profile lines using laser; check diagonals (squareness).
- Confirm services locations and provide noggins/pattresses or carriers where required.

## Profile Installation

- Cut profiles to length.
- Fix at 150–200 mm c/c (dependant on profile selection) with suitable anchors/ fixings.
- Ensure all mitred corners line up perfectly
- Protect channels from debris during adjacent works.

## Services & Openings

- Sprinklers: maintain coderequired gaps/escutcheons; coordinate with fire contractor.
- Luminaires/MEP: install independent supports; fit service rings and trims to membrane positions.

## Membrane Handling & Preparation

- Acclimatise roll; inspect for colour/batch; ensure clean gloves and table.
- If factory precut, verify cutting list vs site measures; if cut on site, allow for system's elastic recovery per profile type.
- Avoid sharp tools near finished face; keep work area dustfree.

## Initial “Tagging” (PreTension/Locating)

- Offer the membrane to the frame; insert small tags of fabric into the profile at ~5 spots per side (centre, quarter points).
- Check alignment, diagonals, and edge reveal consistency; adjust tags to square and centre the membrane.

## Final Tensioning / Full Installation

- From the centre of each side, work outwards in alternating passes to balance tension.
- Keep the membrane creasefree; relocate tags as required.
- Form internal/external corners per profile detail; avoid overstretching local areas.

## Trimming & Finishing

- Once uniform, trim minimal excess fabric; tuck the remaining edge neatly into the profile.
- Fit edge trims/shadowgap liners where specified; remove masking.

## Cleaning & Handover

- Lightly dust with microfiber/soft brush; vacuum adjacent areas.
- Remove protections; restore HVAC.
- Complete QA checklist and obtain client signoff.

## QUALITY TOLERANCES (TYPICAL)

- Profile alignment/level:  $\pm 2$  mm over 3 m.
- Surface: free of cuts/abrasions/visible creases from normal viewing positions.

### SAFETY

- **Recommended to use towers/ladders, no overreach.**
- **Control noise/dust when cutting aluminium.**
- **Hot works not normally required (fabric system is cold stretch).**  
\* Use gloves and safety glasses when cutting and cleaning

## TOOLS REQUIRED



- Steel Spatula 90 & 160



- Profile cutter



- Fabric cutter



- Chalk line



- Builders line



- Laser level



- Steel file



- Heat gun



- Cordless drill



- Cleaning cloth (100% microfiber cloth)



- PH Neutral cleaner

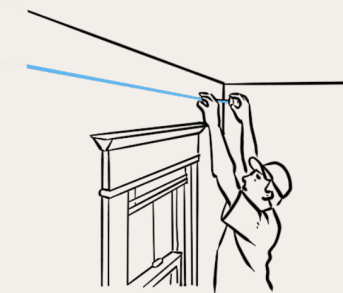


- Safety Gloves

## STEP-BY-STEP INSTALLATION

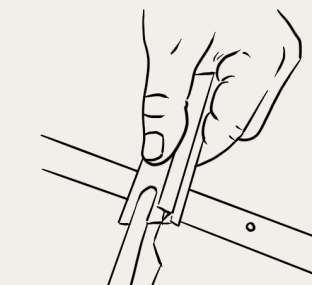
## STEP 1

## Setting out



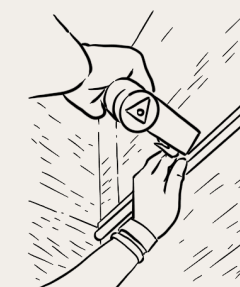
## STEP 2

## Measure and cut profiles



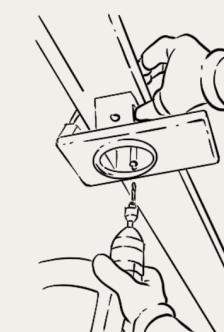
### STEP 3

Installation of profiles  
Fixed every 150-200mm depending  
on the profile used



## STEP 4

## Install MEPs



# STEP-BY-STEP INSTALLATION

**STEP 5**

Cut fabric to size  
(Exact size + 200mm)

5



**STEP 6**

Insert fabric on one side tagging (5 spots)

6



**STEP 7**

Pull the fabric to the opposite wall and fix a single spot in the middle of the wall/profile.  
Ensure a 'V' shape is visible to confirm that the fabric is square.

7-8



**STEP 8**

Do 4 more tagging spots

**STEP 9**

At the five areas indicated in Step 6, carefully remove the fabric, apply tension, and reinsert into the perimeter profiles, starting from the center and work your way outwards to avoid creases or wrinkles.

9

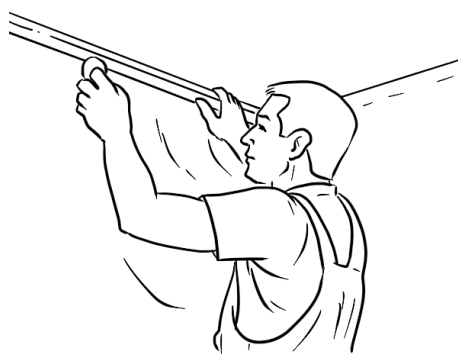


# STEP-BY-STEP INSTALLATION

**STEP 10**

Repeat step 6 & 9 on the remaining 2 walls.

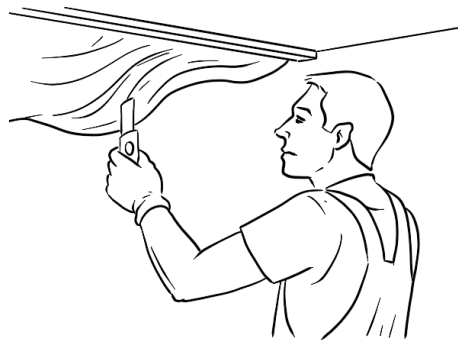
10



**STEP 11**

Once fabric has sufficient tension, start trimming the excess fabric

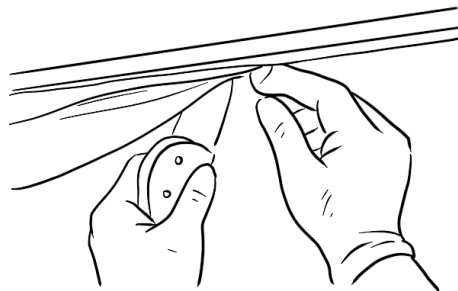
11



**STEP 12**

Insert the remainder of the excess fabric into the profile

12



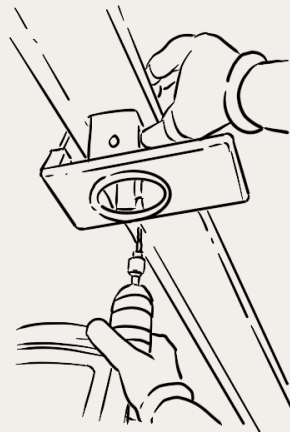


# LIGHT INSTALLATION

## STEP 1

Install mounts, leveled using builders line

1



## STEP 2

Cutout hole in pizza shape

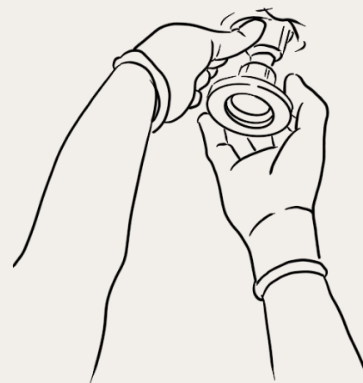
2



## STEP 3

Insert the light fitting

3



# MAINTENANCE, CLEANING & REPAIRING

## MAINTENANCE

- No routine maintenance beyond periodic dusting and inspection. Avoid impact and sharp objects.
- Scuffs on fabric can be removed using a fabric shaver

## CLEANING

- Light soiling: soft brush, microfiber cloth, or low-suction vacuum brush.
- Smudges: damp cloth with mild neutral detergent; no abrasives, solvents, or steam. Test in an inconspicuous area first.

## REPAIRING

- Significant damage: replace the membrane; existing profiles are reusable.
- It is recommended to keep a spare membrane in attic stock for future replacement as slight colour variation could occur between production batches.