

Office-Well-Being

Open plan offices

- Need to be carefully designed to control the possible **noise** and **echo**



“Acoustics” in offices

1) Most important complaint is noise for offices



BOWIQ Bowiq - Beyond Acoustics -
315 followers
3mo • 

Interesting rapportage about the open plan offices (kantoorruimten) and the negative effects it could have. Crucial is the acoustics in these designs. Sorry it's only in Dutch.

Any questions about the right acoustics in offices? Just drop us a DM or email (info@bowiq.com)



Ziek door mijn werkplek gemist? Start met kijken op NPO Start
[npostart.nl](https://www.npostart.nl)

https://www.npostart.nl/de-monitor/24-02-2020/KN_1712023

Hard surfaces reflect



This effects the Well Being



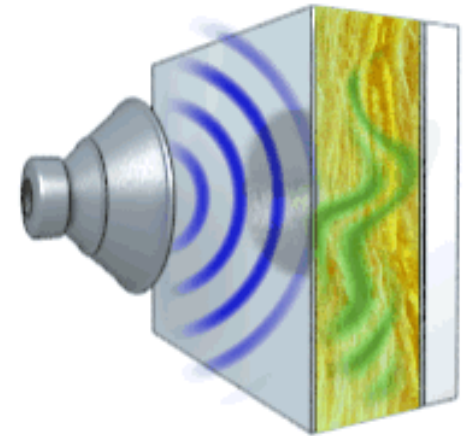
Absorption is needed

Principle

Sound waves need to be absorbed not reflected

Introduce absorption on wall or ceilings

Sound Absorption



BoSpray

Cellulose based acoustical spray plaster



BoSpray

High sound absorption

NRC(Noise Reduction Coefficient) = 0.65 – 0.95

15 mm: NRC 0.65
25 mm: NRC 0.75
37.5 mm: NRC 0.85
40 mm: NRC 0.95



Do visit www.bospray.com

BoSpray

LEED® Contribution Points V2.2

2 Credits for recycled content

3 Credit for low **VOC** emitting material

2 Credits locally sourced material*

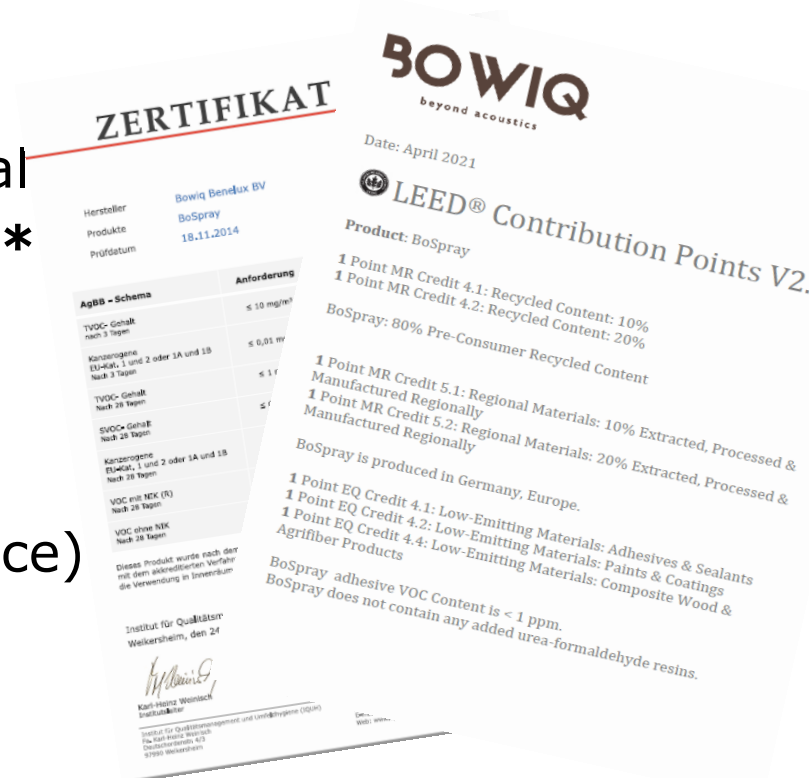
* Low carbon footprint

BREEAM®

HEA05, 1 credit(Acoustical performance)

HEA02, 1 credit(Internal air quality)

Do visit www.bospray.com



Office-Well-Being

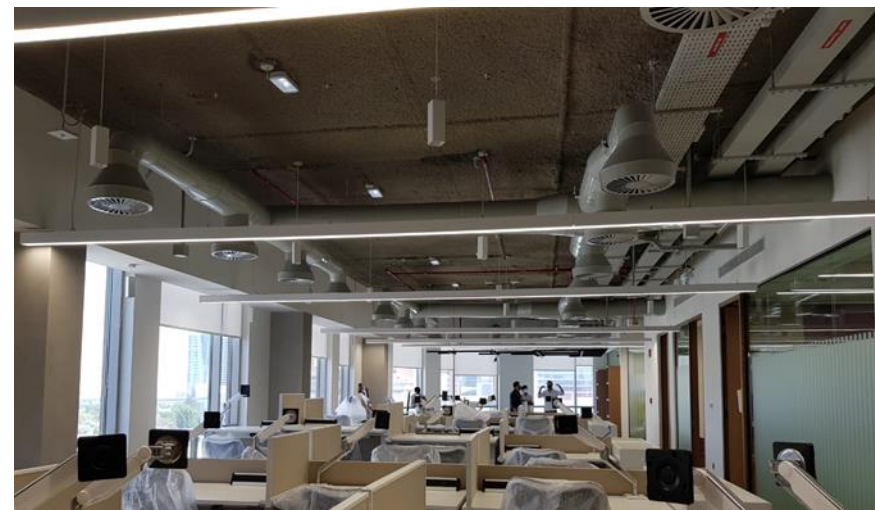
BOWIQ
beyond acoustics



Office, London UK



Siemen HQ Office, Dubai



Office media city, Dubai

Where we are

Head office
Sales office
Partners



Do visit www.bospray.com