



BoSpray

Different Surfaces

BOWIQ
beyond acoustics

Content

- 1) Who & where we are
- 2) The product
- 3) Different surfaces & how to prepare

Who we are

Specialist in acoustical plaster
systems

Where we are

Head office
Sales office
Partners



The product

Acoustical spray plaster



BoSpray

Cellulose based acoustical spray plaster

1) Recycled cellulose 80% & waterbased emulsion



+



=



Different surfaces:

Which surface:

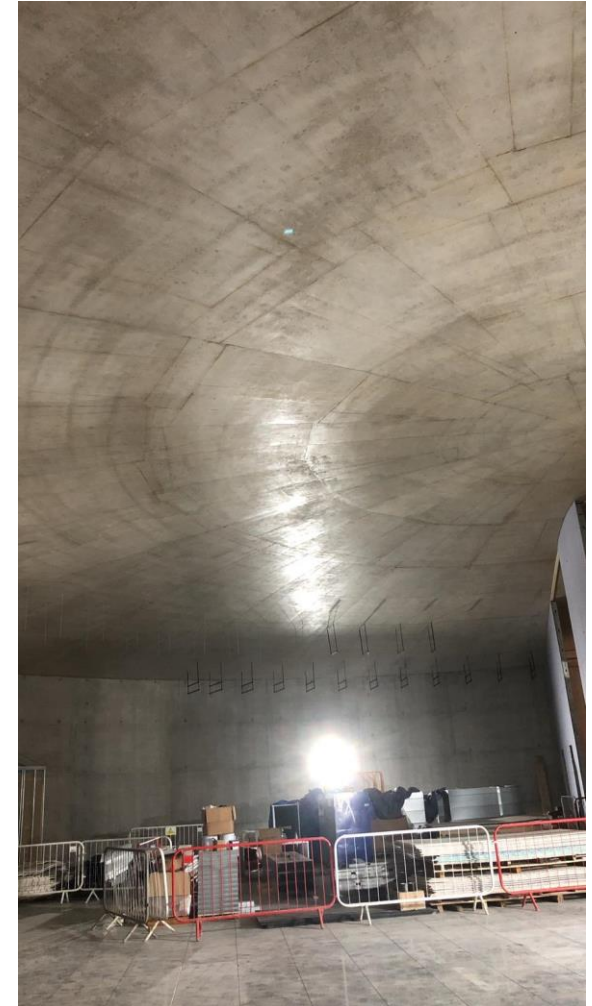
- Concrete
- (Gypsum) board
- Gypsum plaster
- Corrugated metal sheets



Different surfaces:

Concrete:

- A commune used surface for exposed ceilings
- No pre-treatment needed



Different surfaces:

(Gypsum)board:

- Joints to be repaired
- BoPrimer to be applied
- BoSpray contains a lot of water which can cause the board to bend when not sealed



Different surfaces:

Gypsum plaster:

- BoSpray contains a lot of water which can cause certain repair spots to be soaked loss.
- BoPrimer to be applied over the gypsum repair spots



Gypsum

Different surfaces:

Pipes, ducting & utilities

- Commune with exposed ceilings
- No pre-treatment needed



Different surfaces:

Corrugated metal sheets

- These surfaces are mostly anodized so no special primer is needed

