

The **specialist** in sustainable
acoustical **ceiling solutions**

BOWIQ
beyond acoustics

Europe, Middle East & Asia

Bowiq Benelux BV

Hullenbergweg 278

1101 BV Amsterdam

info@bowiq.com

www.bowiq.com

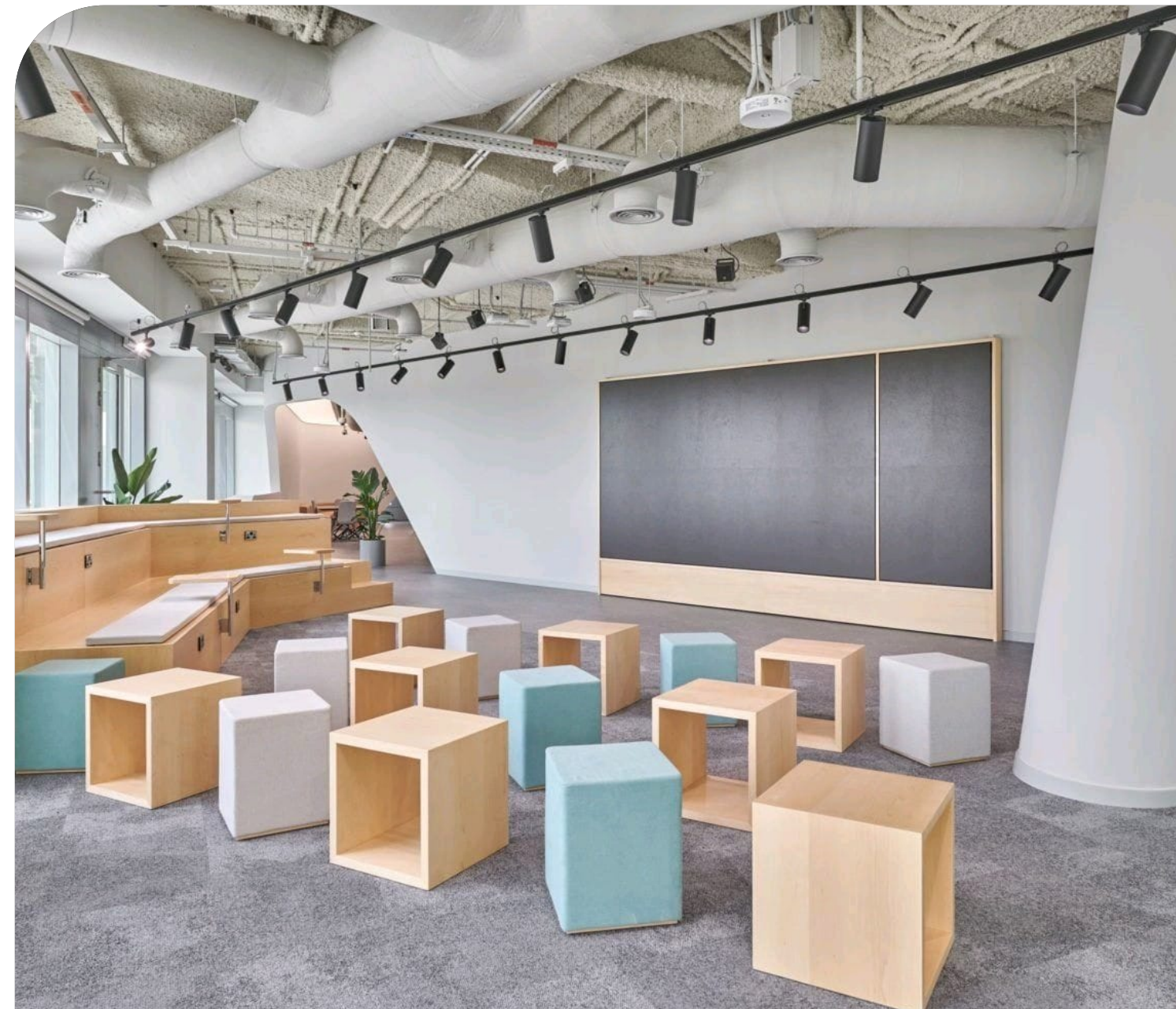
North America

Bowiq Nort America LLC

16192 Coastal Highway, Lewes,

DE 19958, USA

Tel.: +1 302 703 7600





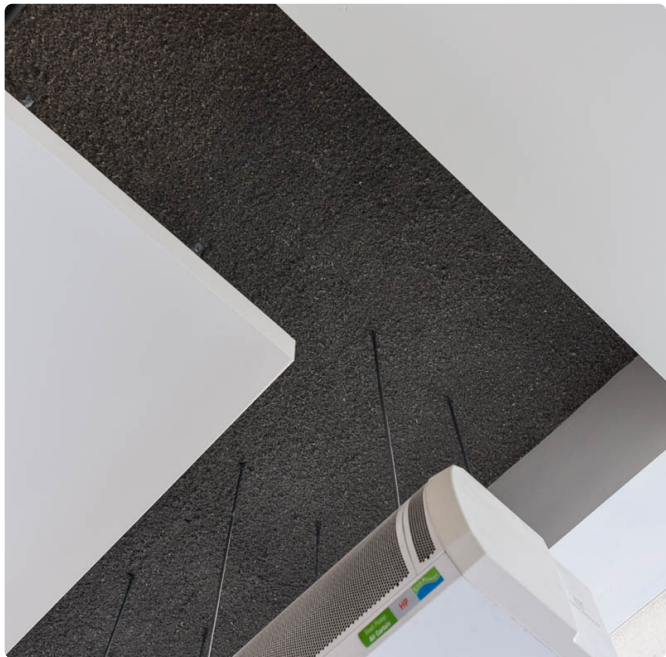
BoSpray

acoustic spray

Acoustic performance

A very effective cellulose based acoustical spray plaster that creates a seamless acoustical ceiling. The ideal acoustical solution for “open” ceilings that need an acoustic ceiling product that’s fast and efficient in the application.

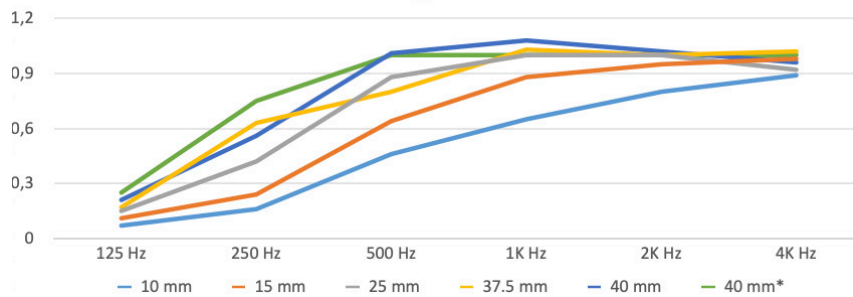
Because often designs use hard materials on floors and walls, the acoustics isn’t optimum. This affects heavily how



you will experience a space. Especially places where more people come together. There are ways to improve the acoustics. An acoustic spray is one of ways to correct the acoustics in a space.

Features

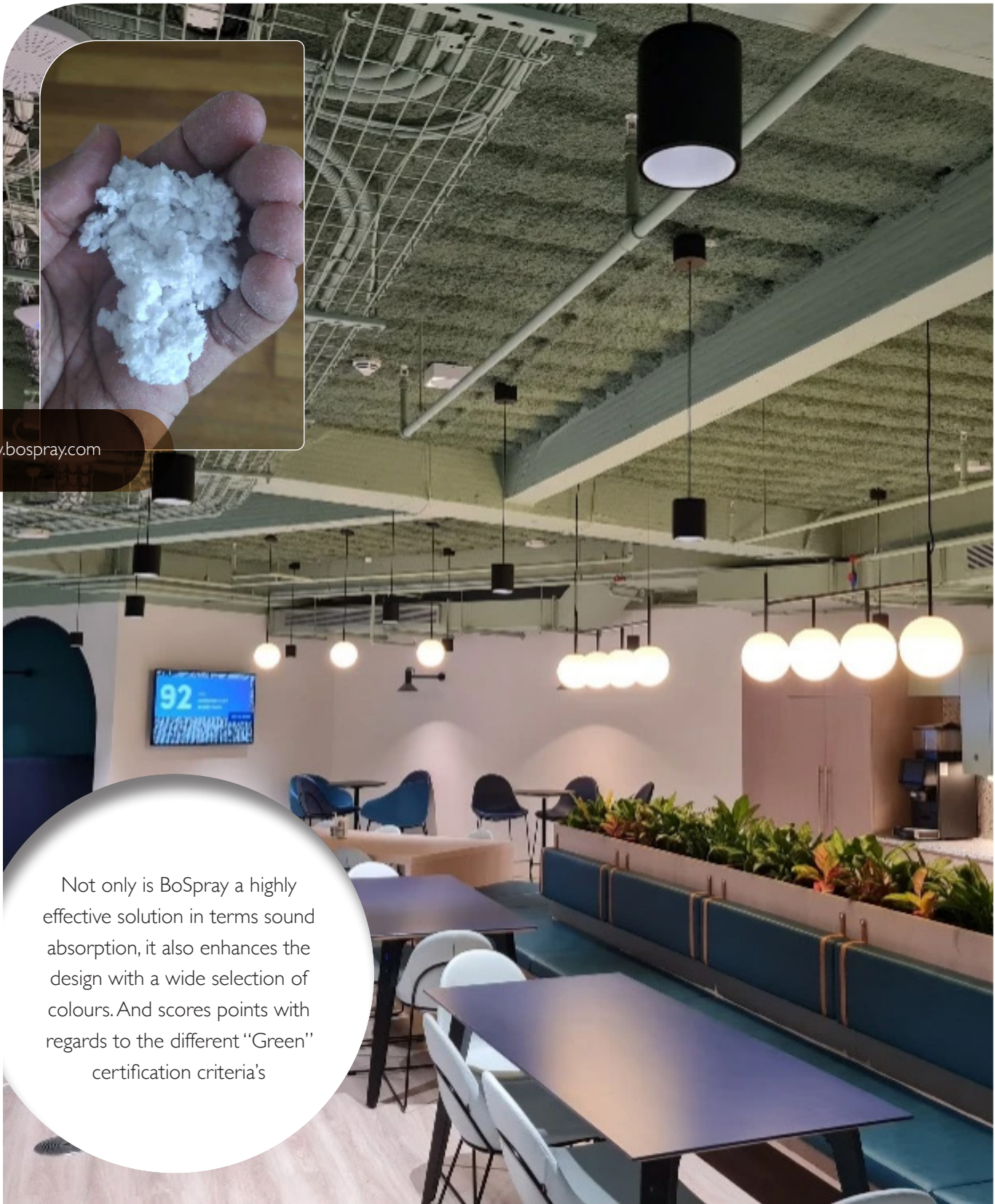
- Fast installation
- High sound absorption
- High recycled content
- Cost effective
- Colour matching
- Can be applied on curves



Fire-resistant class

Classification: B s1 d0 according to EN 13501-1 & ASTM E84 Class A.

Layer thickness	α_w	NRC	Class	125 Hz	250 Hz	500 Hz	1K Hz	2K Hz	4K Hz
10 mm	0,45	0,55	D	0,07	0,16	0,46	0,65	0,8	0,89
15 mm	0,55	0,65	D	0,11	0,24	0,64	0,88	0,95	0,98
25 mm (1 inch)	0,7	0,85	C	0,20	0,44	0,89	1,01	0,98	0,93
37.5 mm	0,8	0,85	B	0,17	0,63	0,8	1,03	1	1,02
40 mm	0,9	0,95	A	0,26	0,62	1,02	1,07	1,01	0,96
40 mm on rib deck	1	1.00	A	0,25	0,75	1	1	1	1



www.bospray.com

Not only is BoSpray a highly effective solution in terms sound absorption, it also enhances the design with a wide selection of colours. And scores points with regards to the different “Green” certification criteria’s

What is LEED, BREEAM and WELL and what does it mean for acoustic spray?

LEED (Leadership in Energy and Environmental Design), BREEAM (Building Research Establishment Environmental Assessment Method), and WELL (WELL Building Standard) are sustainability certification programs for buildings. They aim to promote environmentally-friendly, health-focused and resource-efficient building design and construction practices.

All three of these certification programs have the following in common:

Focus on Sustainability: All three programs emphasize sustainable design, construction, and operation of buildings. They consider factors such as energy efficiency, water conservation, and indoor air quality, among others.

Performance-Based: These programs are performance-based, meaning that buildings are evaluated based on their actual performance, rather than just their design.

Multi-Disciplinary: They take a multi-disciplinary approach to building design and operation, considering not just environmental impact, but also health and wellness of the building's occupants, and resource efficiency.

Points-Based System: All three programs use a points-based system to rate buildings. In these systems, buildings are awarded points based on their performance in various categories, such as energy efficiency, water conservation, and indoor air quality. The more points a building earns, the higher its certification level.

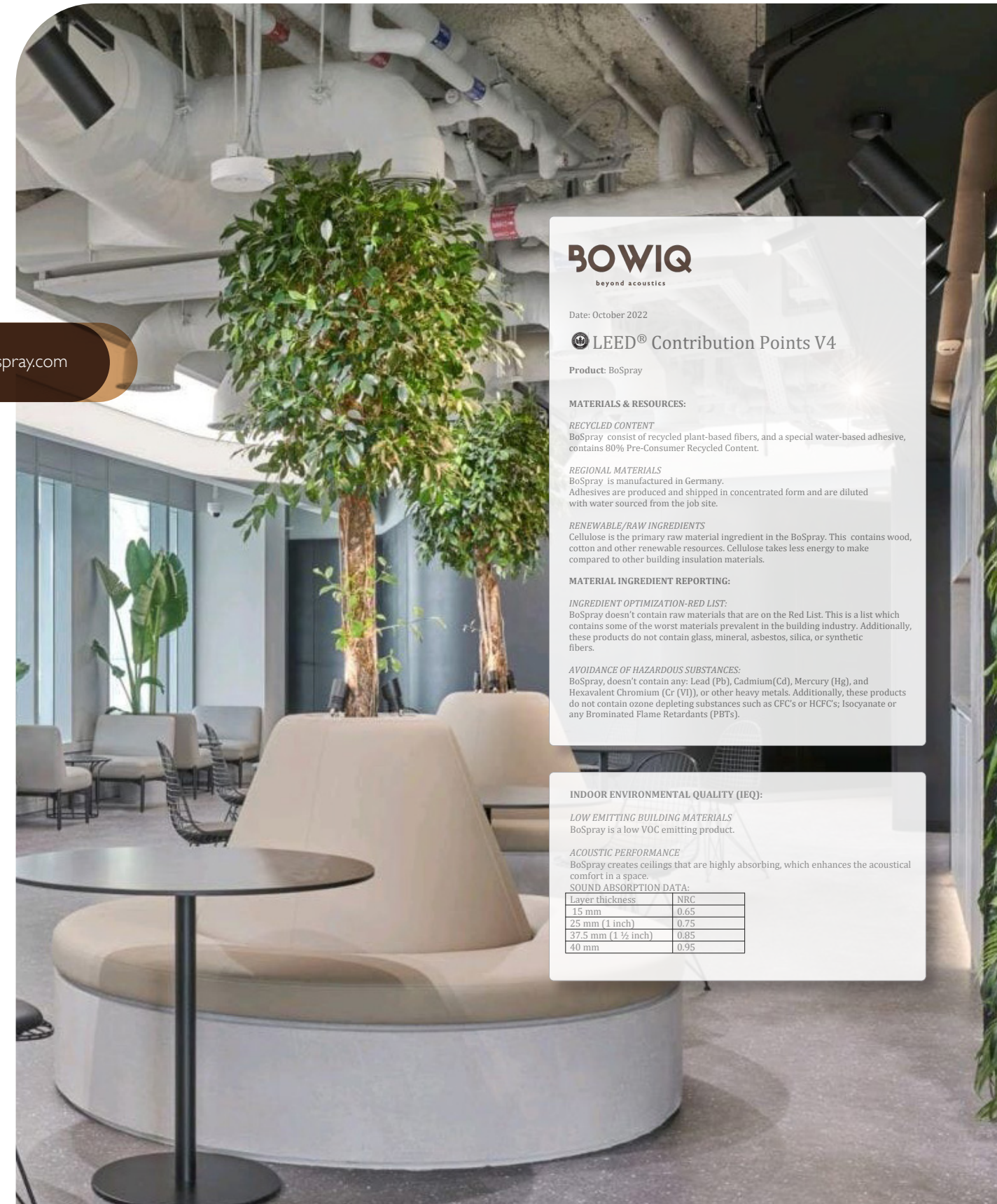
Continuous Improvement: Finally, all three programs promote continuous improvement, encouraging buildings to strive for ever-higher levels of sustainability, health, and resource efficiency over time.

In summary, LEED, BREEAM, and WELL are sustainability certification programs that share a focus on sustainability, performance-based evaluation, a multi-disciplinary approach, a points-based system, and a commitment to continuous improvement.

BoSpray earns points on these certification programs on the following area's:

- High recycled content
- Low VOC values
- Acoustical properties.
- Insulation properties
- No harmful substances from the red-list used
- HPD (Health Product Declaration)

For more information please get in contact with us.



Acoustic color design

COLOR TRENDS FOR CEILINGS IN GENERAL

When it comes to color trends for ceilings, the most popular colors are generally those that are neutral and have a calming effect.

This is because the ceiling is a large surface area in a room and a bold color on the ceiling can be overwhelming.

Colors are a vital part of the design of any building and ceilings are a part of that room or building.

An acoustic spray can not only give a perfect contribution in terms of creating a sound acoustical space it can enhance the design by a specific color chose. There for BoSpray can be supplied in any color of your choice.

With the help of the Acoustical coat we can also apply a fresh coat on top of an acoustical surface in order to match a specific color or give the surface a new or fresh look

Acoustical Coat

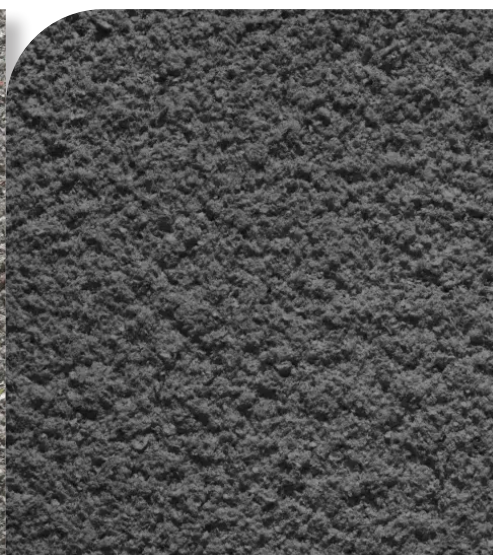
The coating that can refresh or change the color of your acoustical plaster or panel with out affecting the acoustical properties



Any RAL or NCS color



Eco-grey



Antraciet



Eco Light-grey



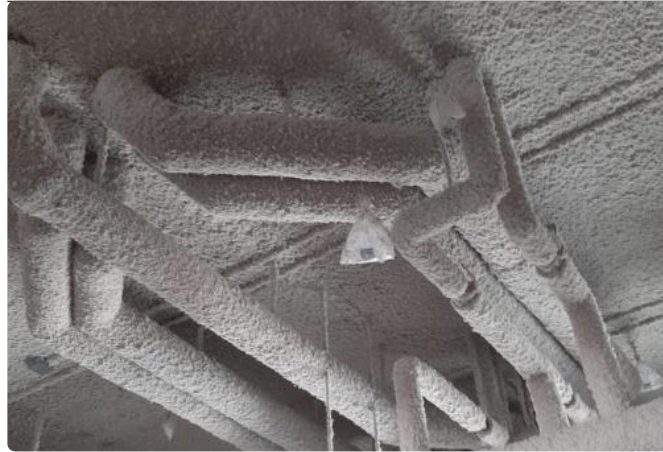
Beige Brook



White



Black



Technical data

PRODUCT GROUP: BOSPRAY

DESCRIPTION:

BoSpray is a seamless highly acoustical spray plaster based on recycled cellulose that can be applied in high layer thickness in a single layer.

- Excellent acoustical properties
- Water-based
- Quick application, very high layer thickness, 5 - 25mm in a single process • Colors: Light Grey, Eco dark Grey, Black & white. Special colors on request
- Lightweight
- Gloss: matt
- Thermal conductivity coefficient:
d = 0,038 W/(mK)
- Average density: 65 kg/m3.

SUSTAINABILITY:



Please contact us or visit our website to request more information about the above.

APPLICATION:

Both new constructions and renovations, as long as the acoustic experience plays an important role.

For instance: Community spaces, classrooms, restaurants, sports, auditoriums, car parks, offices, swimming pools, etc.

Fire resistant class

Classification: B s l d0 according to EN 13501-1 & ASTM E84 Class A.

Acoustics

Layer thickness	NRC
10 mm	0,55
15 mm	0.65
25 mm (1 inch)	0.85
40 mm	0.95
40 mm on rib deck	1.00

Application:

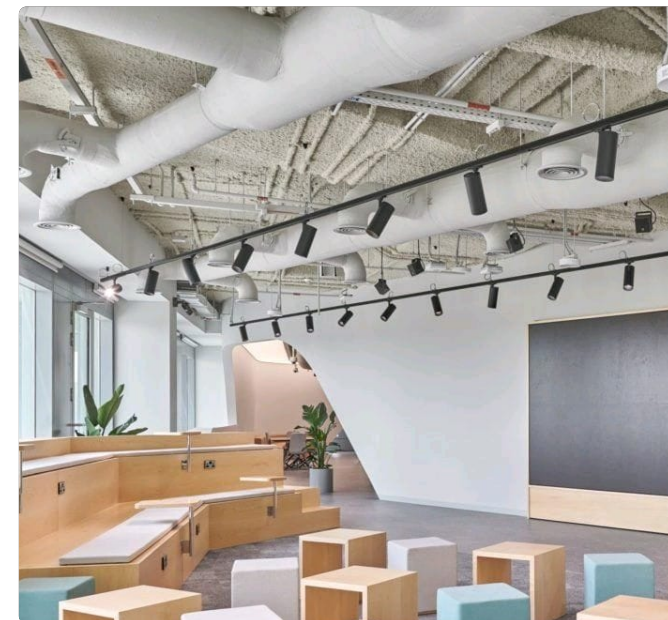
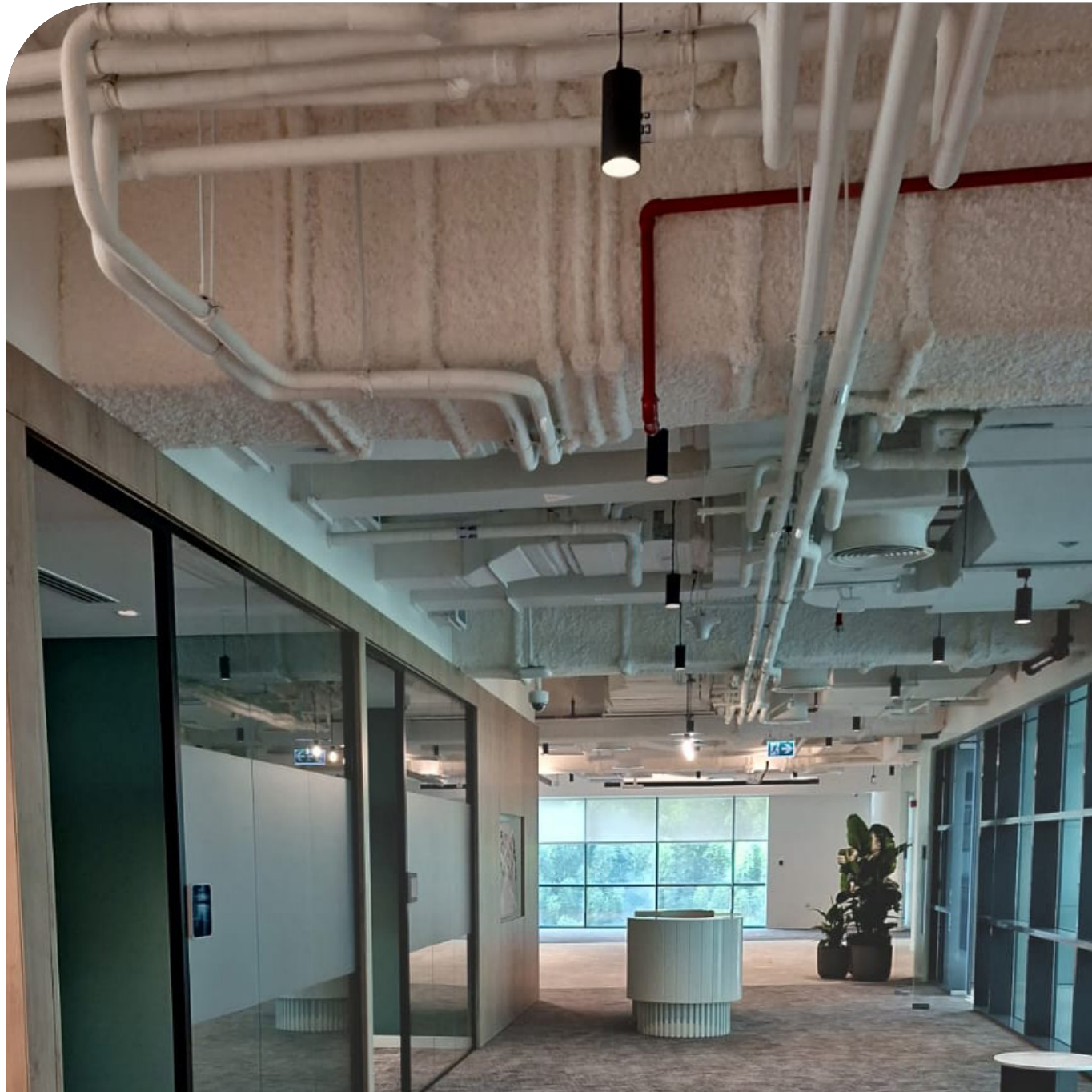
The BoBinder and BoFiber will be applied with the help of a special cellulose fiber blower. For application details please contact us

Substrate conditions:

- Substrate needs to be clean, dry and free of dust;
 - Remove lose parts;
 - Completely close holes and cracks in substrate;
 - Unevenness >3mm must be smoothened;
- Substrate conditions:
- Aluminium or plastic profiles need to be placed to



BoSpray projects



beyond acoustics by Bowiq