

BOWIQ

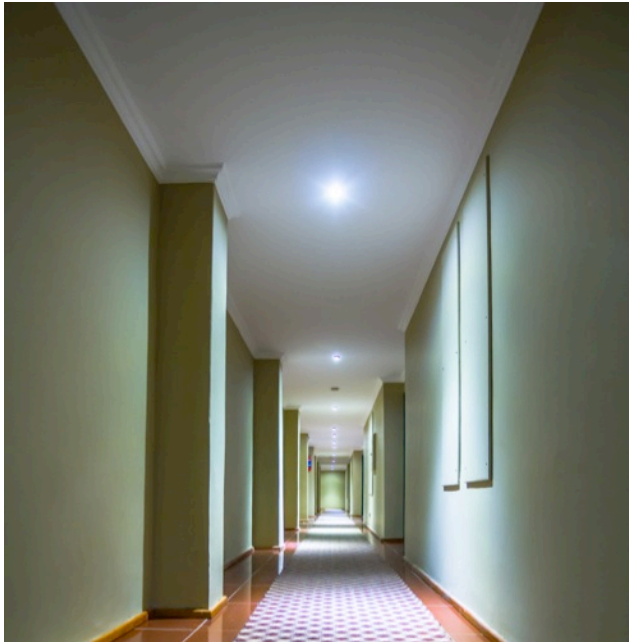
beyond acoustics

Date: September 2018

Product: BoCoustic SHR

Description:

A smooth seamless acoustical panel system.



Properties:

- Panel material (BoPanel)
 - The panel consist of natural fiberglass.
 - Low flame spread according to EN 13501-1(A2)
 - Lambda : 0,033 w/Mk
 - Dimensions: 2700 x 1200 x 20 per panel

- Plaster material (BoCoustic plaster)
 - Easy application.
 - Based on special medium size acoustical neutral granulates.

BOWIQ

beyond acoustics

Application:

The installation of the system is allowed only by certified companies.

1. Cleaning up the concrete substrate of oil and dust
2. Mixing the suitable adhesive glue according the guidelines
3. Applying the suitable adhesive glue fully on the BoPanel surface with a 5 mm notched trowel.
4. The BoPanel acoustic-panels are directed and glued so the joints are staggered $\frac{1}{2}$ to $\frac{1}{2}$ by hand. Make sure the panels are leveled between each other. Sand the joints with a 80 grid in circular motions. Check that the whole surface is consistent with no variations in thickness.



6. The joints can be spot repaired by BoCoustic plaster if needed.
7. After drying(24 hours) the surface can be sanded. After this the leveling of the surface is again checked on multiple places to assure the surface is perfectly leveled.
8. BoCoustic plaster is mixed constantly for about 2-3 minutes until getting a homogenous mass. No external material adding. Avoid all types of contamination. Use only stainless and clean tools.
9. The material BoCoustic plaster can either be applied by trowel or by spray. It can be applied with a screw pump.(Such as GBT type GB430 or GB250) The compressor to be used: Capacity approximate 800 liter air per minute. Nozzle: 8-10 mm The consumption is 1.5 – 2.0 kg/m². After applying the material it can be smoothed with a large trowel.
10. After 12 – 24 hours drying the surface can be sanded to achieve if needed levelness
11. An additional coat of BoCoustic plaster can be applied with an approximate consumption of 1 – 1.5 kg/m².